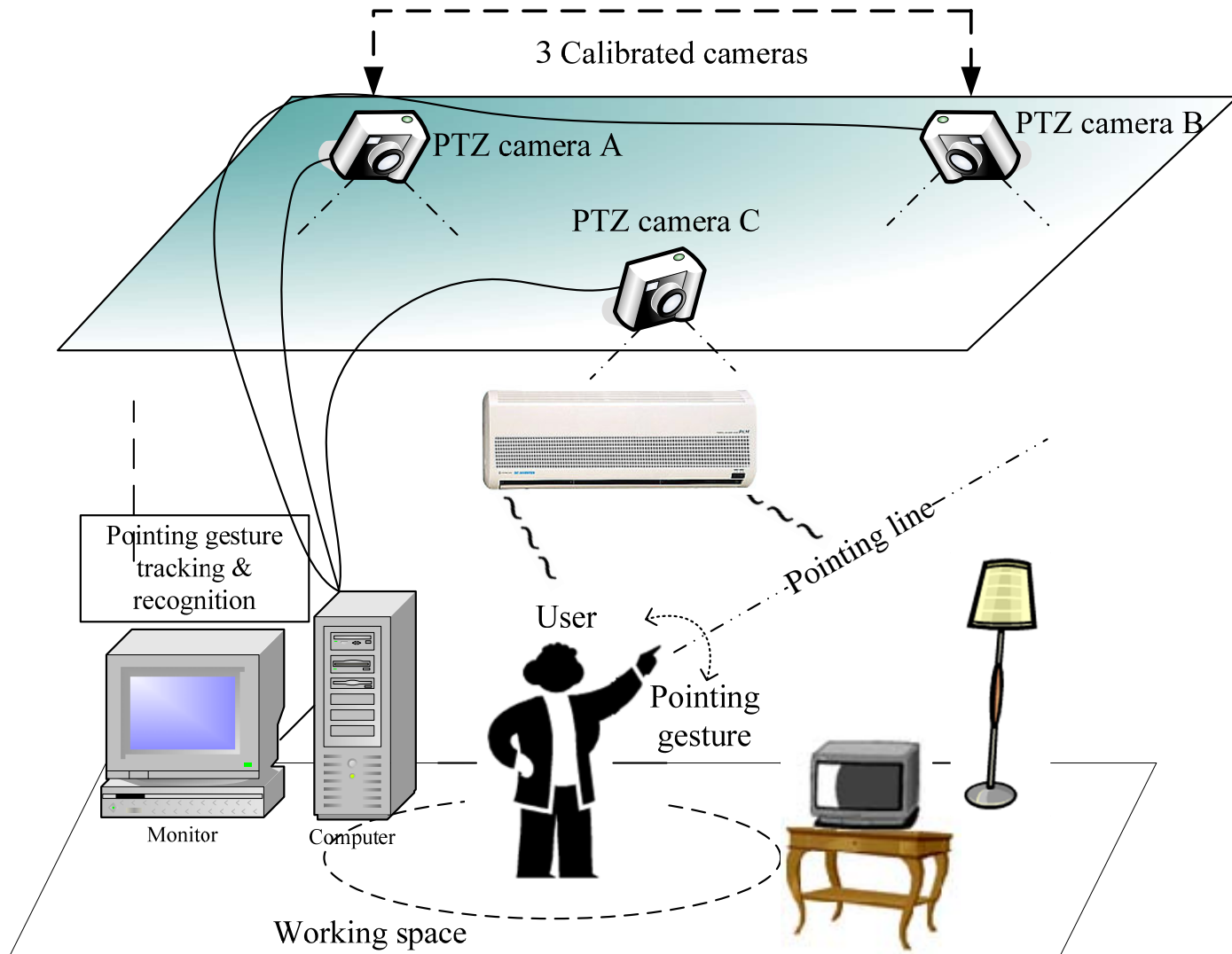
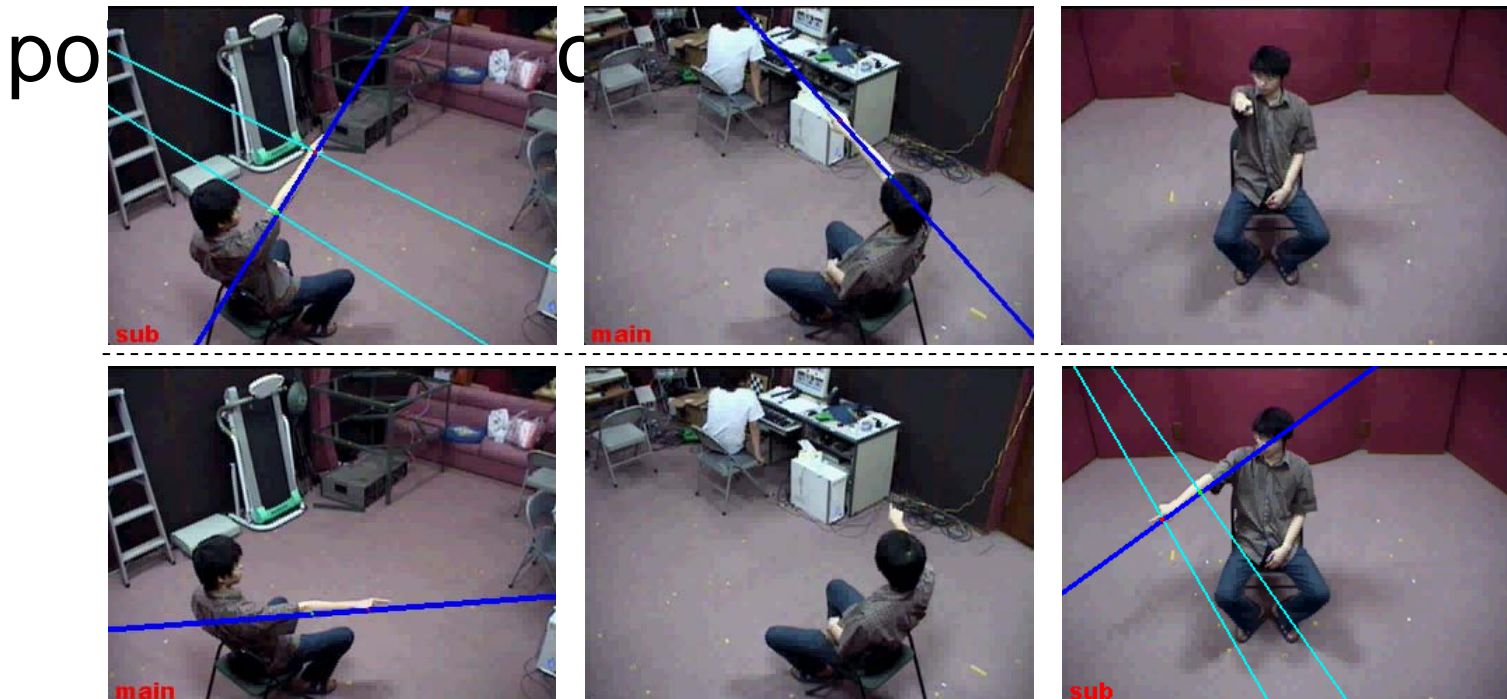


# System configuration



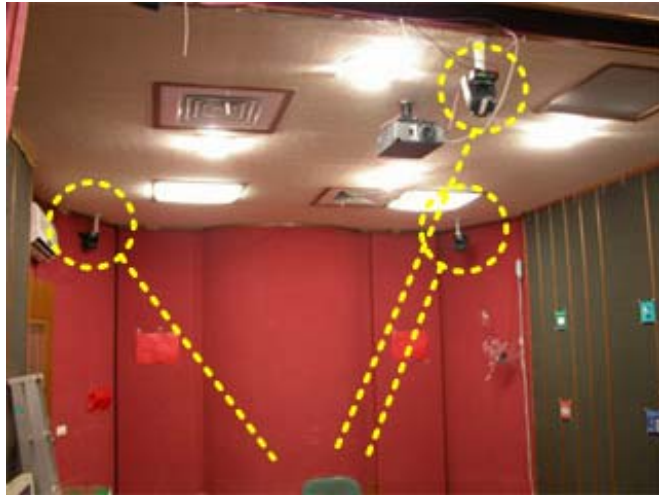
# Choose two cameras

- For the biggest  $Score_{ij}$ , we set view  $i$  as the "main" and view  $j$  as the "sub", and then use these two cameras to refine our



# Experiment results

3 cameras



Images from each camera



8 pre-defined designated targets



# Experiment results



OpenVideo Camera About

The figure displays a 2x3 grid of video frames showing a person in a white t-shirt and dark pants walking in a room with red walls. The frames are labeled 'sub' (left column) and 'main' (right column). Below each frame is a control panel with the following elements:

- Navigation buttons: left arrow, double left arrow, right arrow, double right arrow, and 'frame count'.
- Menu tabs: Camera, Calibration, Pointing Line, 2D Pointing, and Debug.
- Color selection controls: Hue, Sat, and Int, each with a horizontal bar and a vertical slider.

The frames show the person walking from left to right across the room. The 'sub' frames show the person from a side-on perspective, while the 'main' frames show the person from a rear perspective. The control panels below each frame show the current settings for the video processing software.